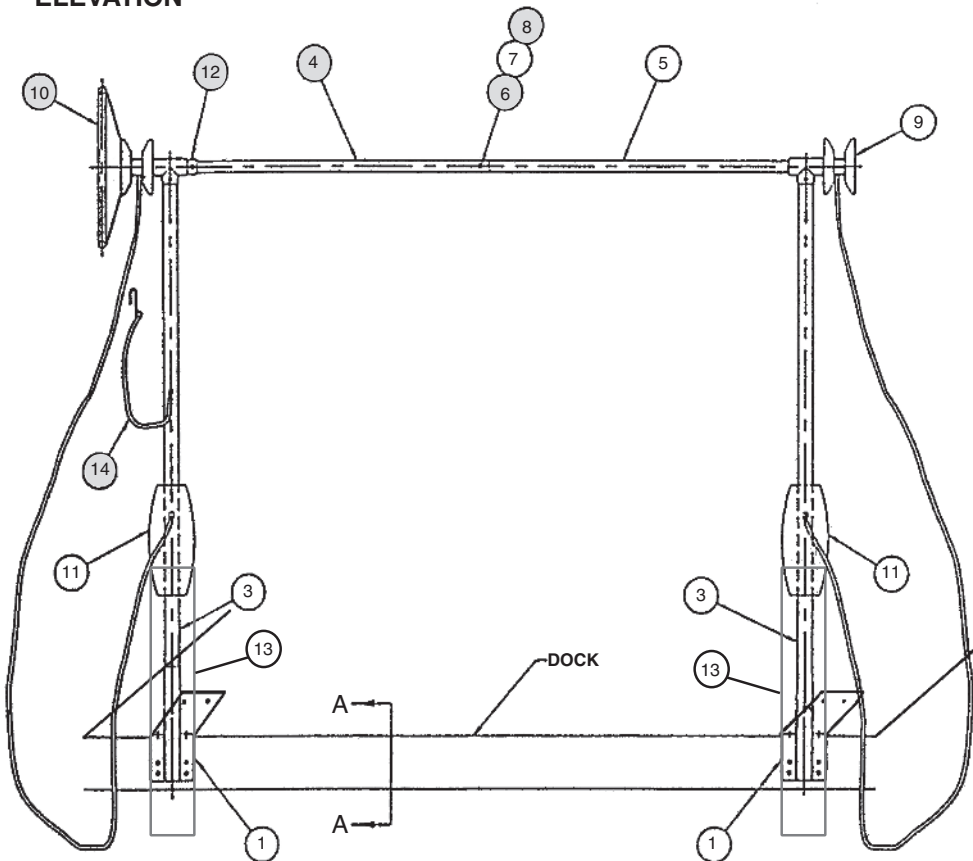


FLIP-A-CANOE ASSEMBLY INSTRUCTIONS

- 1) Install **lift mounting bracket** (1) on the dock. Space brackets as needed for proper canoe balance; between 72" and 104". Secure brackets with "C" clamps and drill 4- 3/8" holes using the bracket as a template. NOTE: Only use two of the four holes in the vertical plate. Install 5/16" truss head bolts using the fender washers on the side of the dock and the aluminum backing plates (C-channel) under the decking. NOTE: If not installing on a Mod-U-Dock, install hex head bolts using the threaded **mounting plates** (2) as shown in SECTION A-A.
- 2) Install **post covers** (13) on **lift mounting bracket** (1), and **bumpers** (11) on **post assembly** (3) then insert post assembly in lift as shown.
- 3) Assemble **wheel shaft** (4&5) using **bolt, nut** and **washer** (6,7,8). Slip **retaining collar** (12) on shaft and install the shaft in the post assemblies by very carefully slipping the shaft through the "Tees" on the top of the posts.

ELEVATION



- 4) Install **rope sheave assembly** (9) and **hand wheel assembly** (10) on wheel shaft and slide toward "Tee" until they just touch. Center shaft evenly on posts and secure set screws. Slide thrust collar against "Tee" and secure set screw. Make sure posts are vertically plumb and secure set screws in mounting brackets (1).

- 5) Install 1/2" **lift rope** by sliding through the **bumper** (11) and hole in post assembly then tie a knot. Install other end of rope through the holes in the **rope sheave assembly** and **hand wheel assembly** and tie knots on outside of wheels. Install rope for **wheel hook assembly** (14) through hole in post as shown and tie double knot to prevent rope from pulling through hole.

- 6) If canoe is not level when completely rotated, adjust **rope sheave** (9) or **hand wheel** (10) by loosening set screw and rotating sheave assembly.

- 7) To secure for high winds, attach bungi cords or ropes over canoe and secure to post assemblies. Secure so that canoe is held firmly on 1/2" lifting ropes.

PARTS LIST

ITEM NO.	QTY	DESCRIPTION
1	2	Lift Mounting Bracket
2	4	Mounting Plate
3	2	Post Assembly
4	1	Pipe - Wheel Shaft
5	1	Pipe - Wheel Shaft
6	1	1/4-20 x 13/4" SS Hex Hd Bolt
7	1	1/4-20 SS Hex Nut
8	1	1/4" SS Lock Washer
9	1	Rope Sheave Assembly
10	1	Hand Wheel Assembly
11	2	Bumper
12	1	Thrust Collar
13	2	Post Covers
14	1	Hand Wheel Hook w/ Safety Line
15	2	Backing Support Plate - Optional

